

Ladok

Student Data Interoperability

2023-06-15 Mattias Sällström



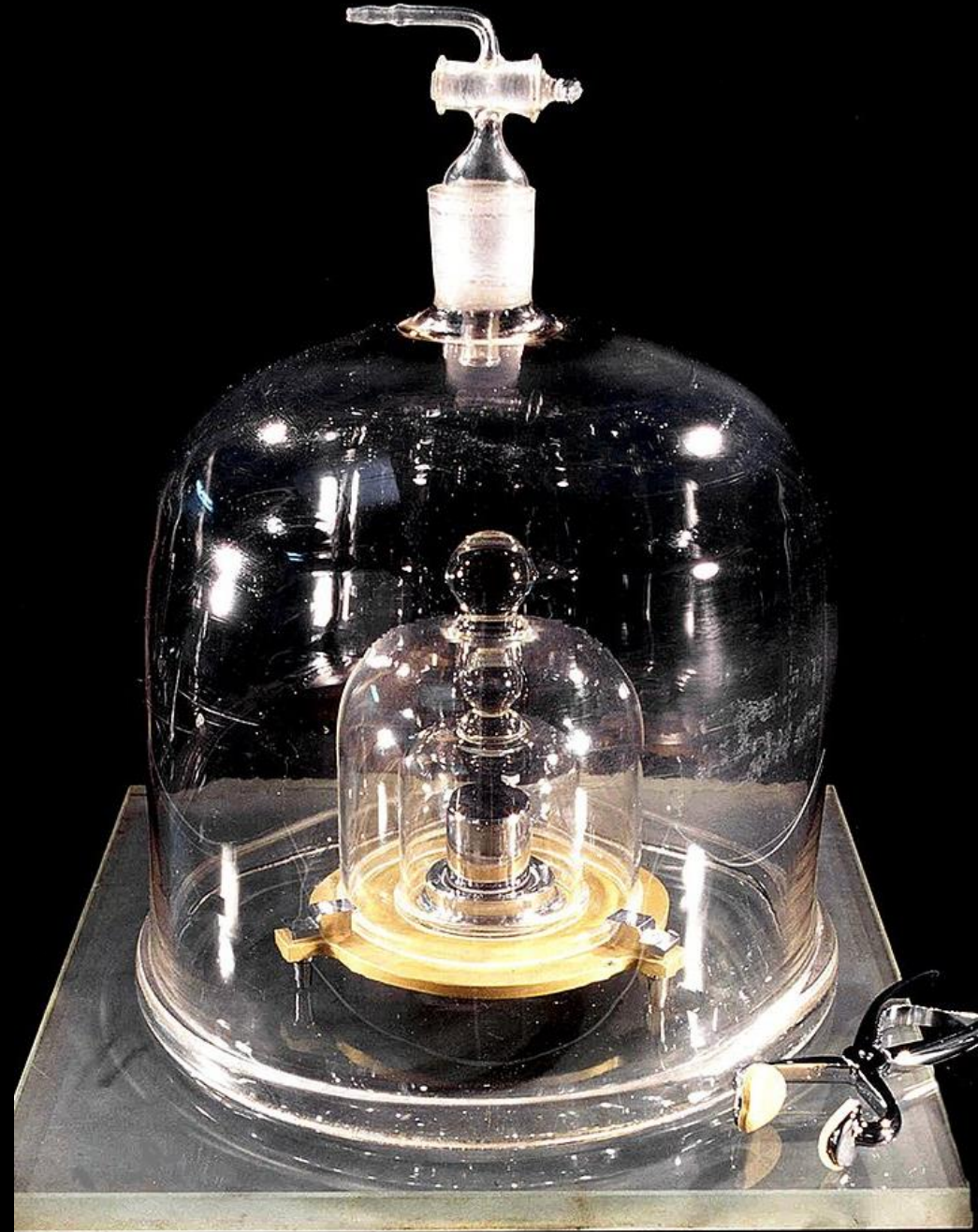


Interoperability

the ability of computer systems or software to exchange
and make use of information

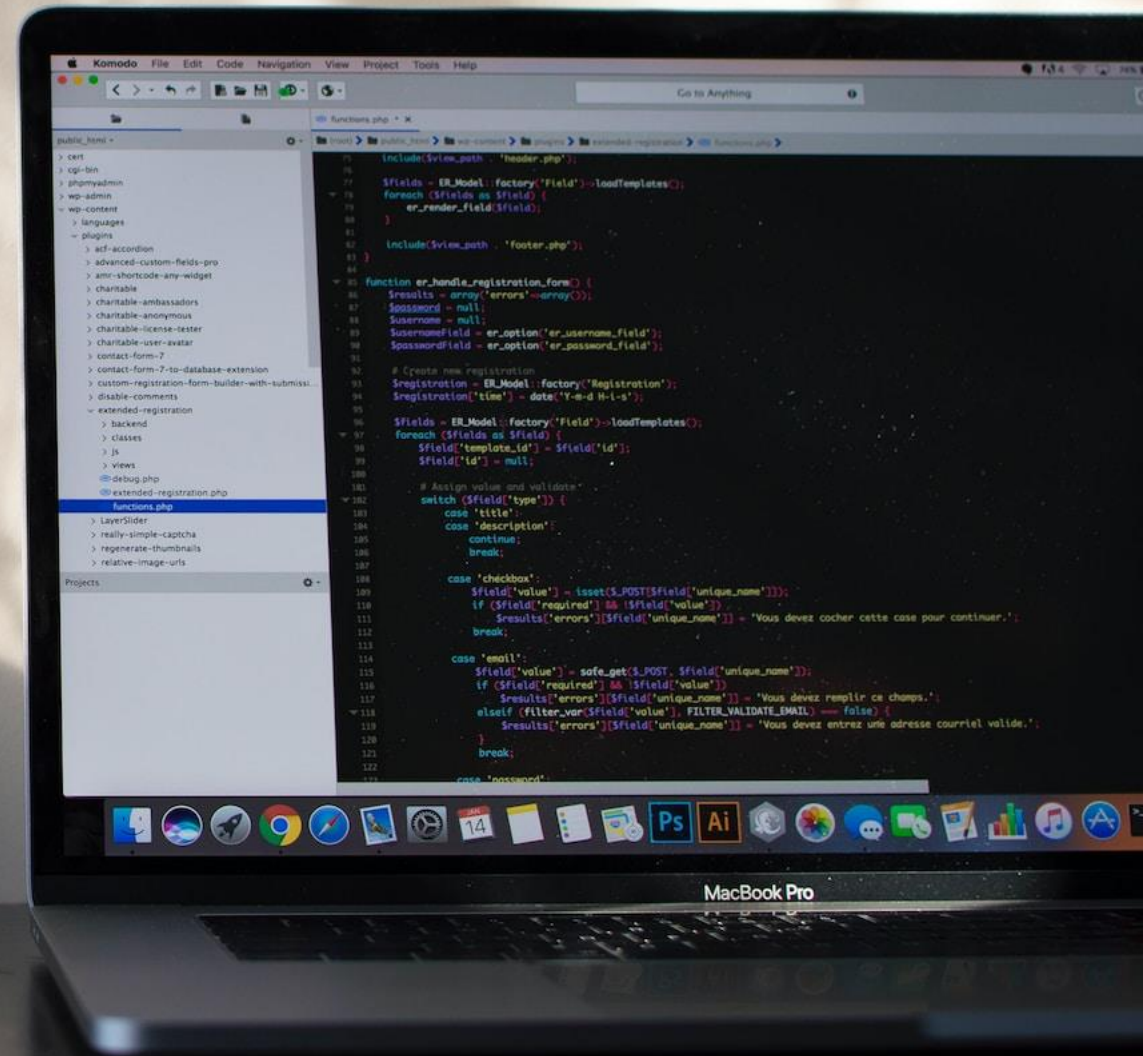
Standardization

A common language that both parties understand and can exchange information with



Mattias Sällström

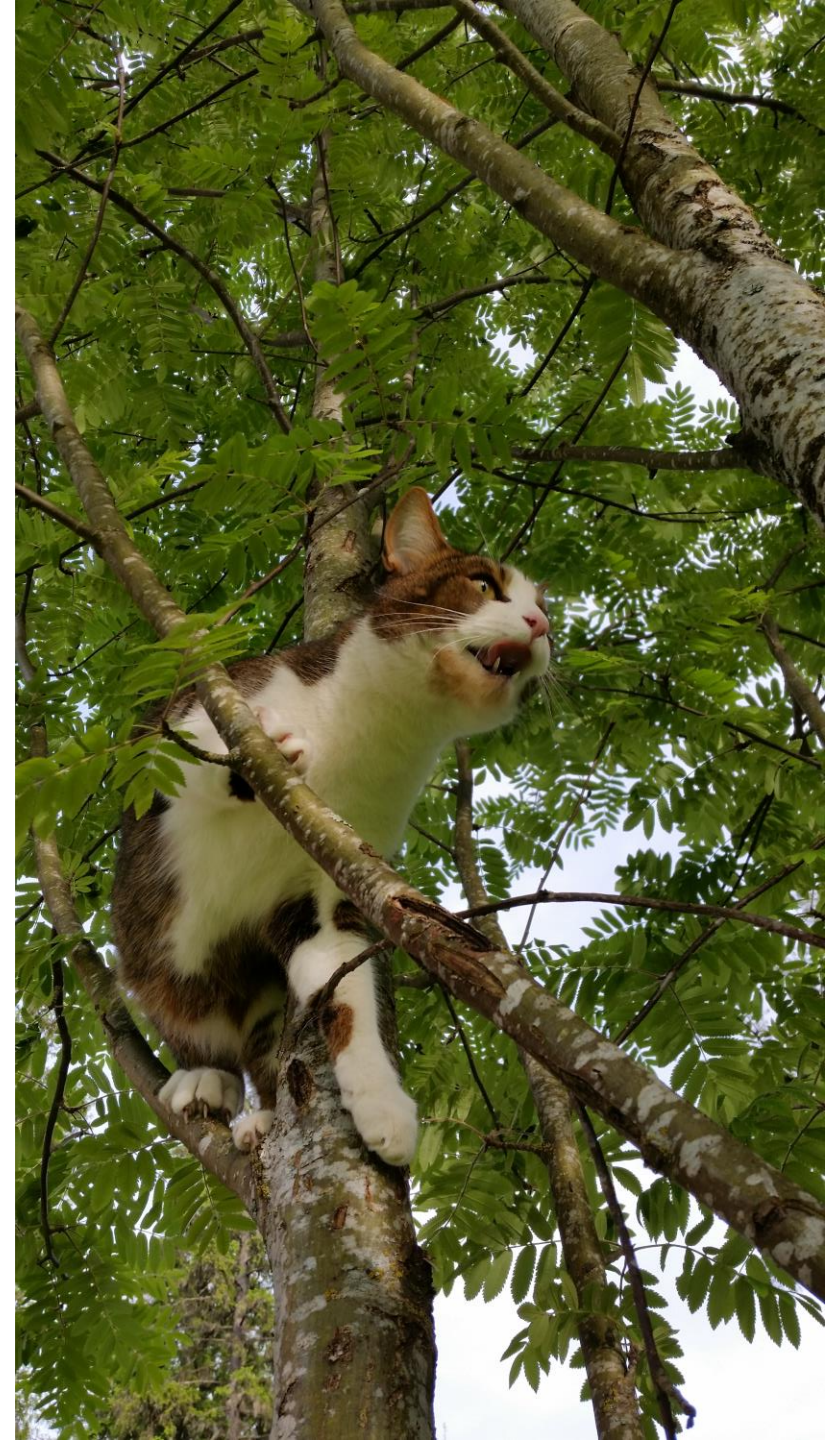
- National Admission System
- Ladok, National Student Information System
- Involved in the Edu-API standardization



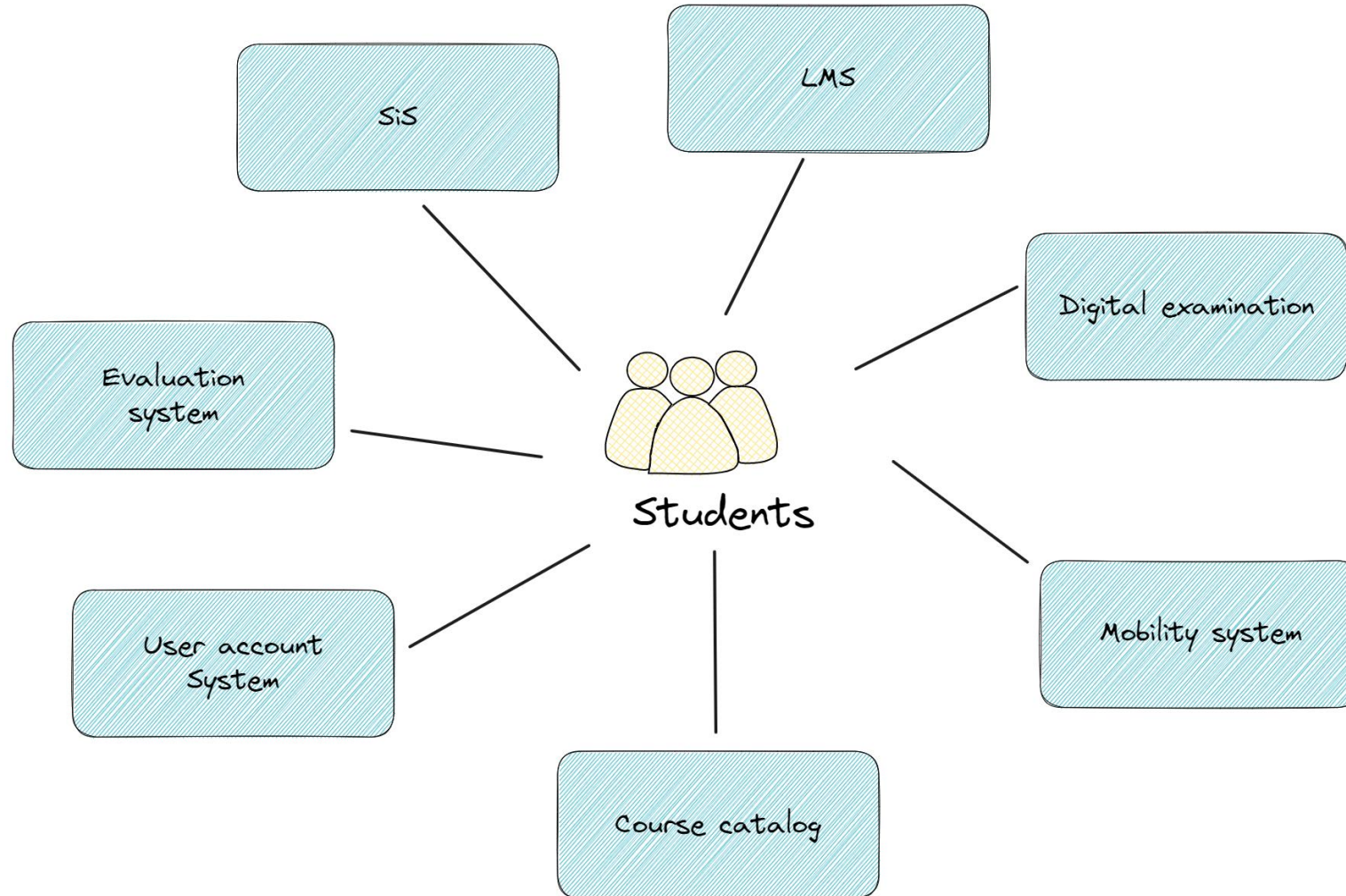


Business Agility

- Flexibility is off essence!
 - new needs or regulations
 - requirements for new tools
 - public procurement acts force us to switch suppliers
- In order to support business change, we need to change processes and system support
- In order to change, we need to control integration



A better learning environment



A better learning environment

- Correct information over many system
- Smooth transition between systems
- Common language between systems

Ladok



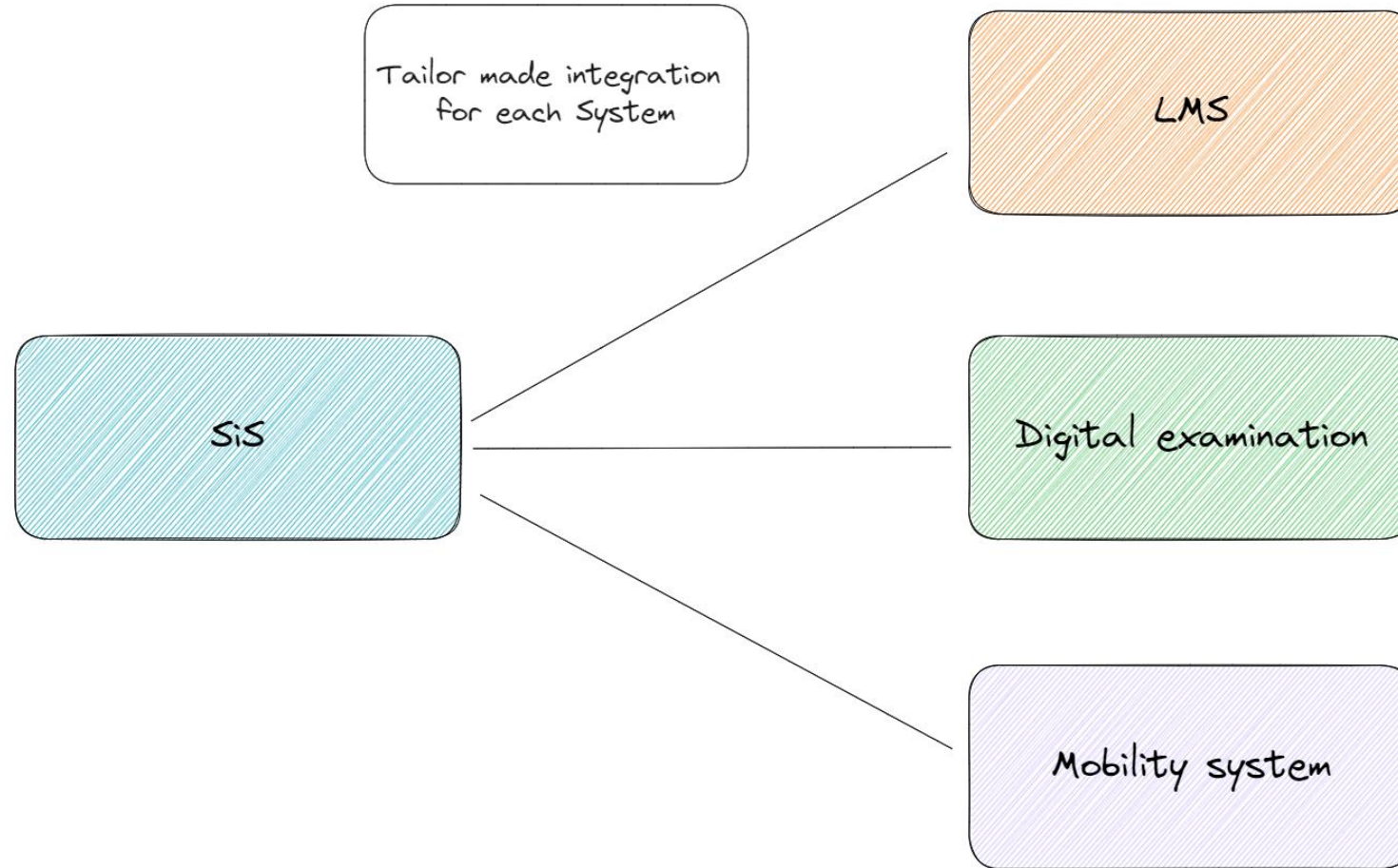
Photo by Annie Spratt on Unsplash

Efficient and cost effective

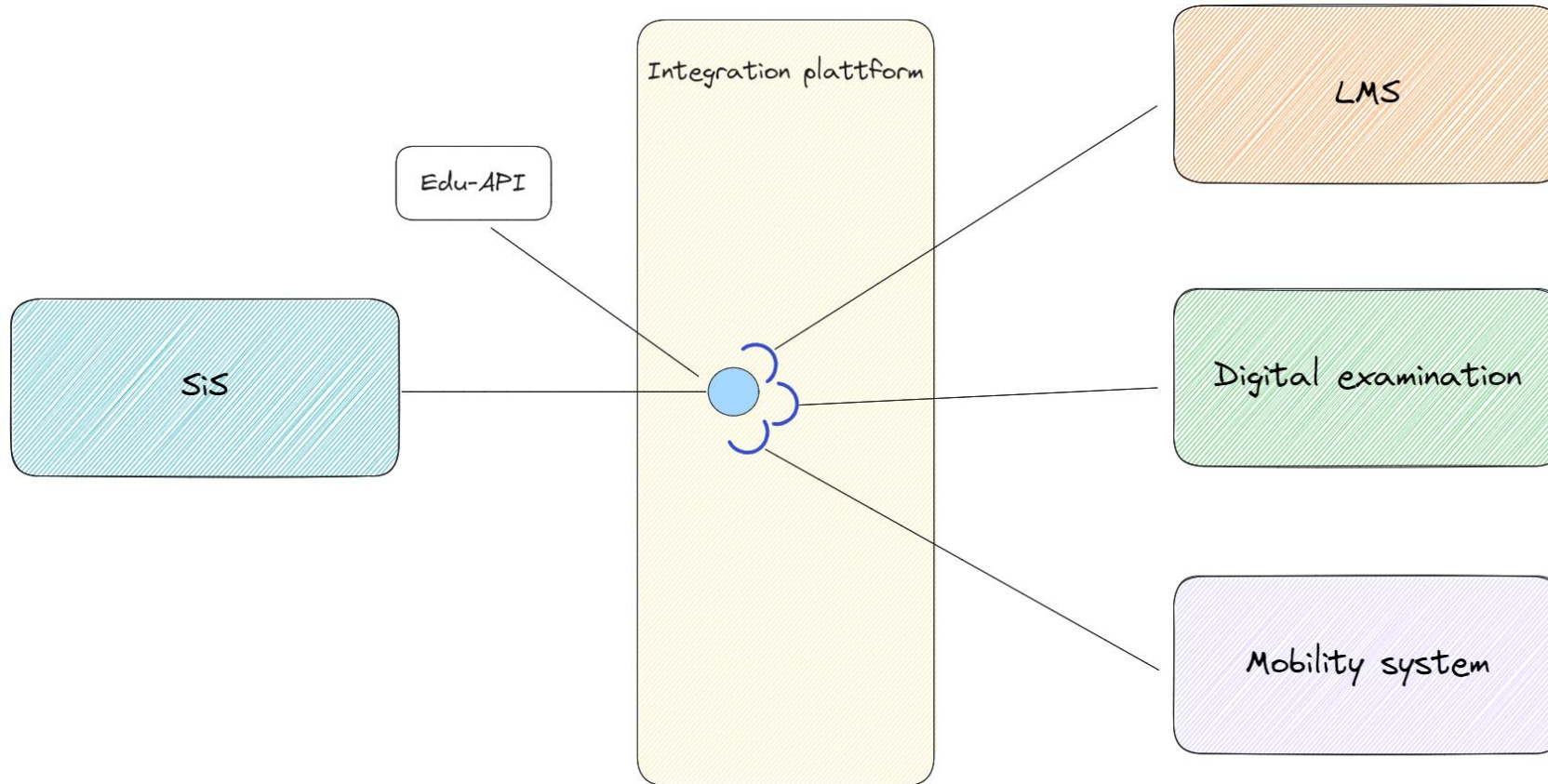
- Standards increase portability
- Requirement in procurement process
- Configuration of new integrations
- Cooperation between universities



No standard



Working with a standard



Synchronous communication

- A request and a response
- Direct communication
- Typically implemented with REST



Asynchronous communication

- A signal that something have happened
- Clients empties their mailbox
- Loosely coupled system



HOW STANDARDS PROLIFERATE:
(SEE: A/C CHARGERS, CHARACTER ENCODINGS, INSTANT MESSAGING, ETC.)

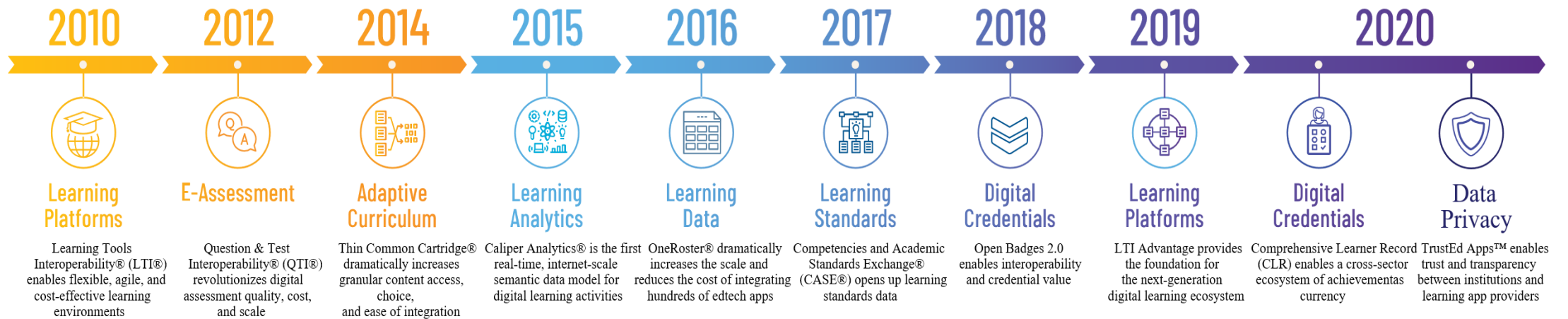




Photo by Philippe Krief on Unsplash

1EdTech Consortium

- LIS – Learning Information Services
- LTI – Learning Tools Interoperability
- QTI – Question & Test Interoperability



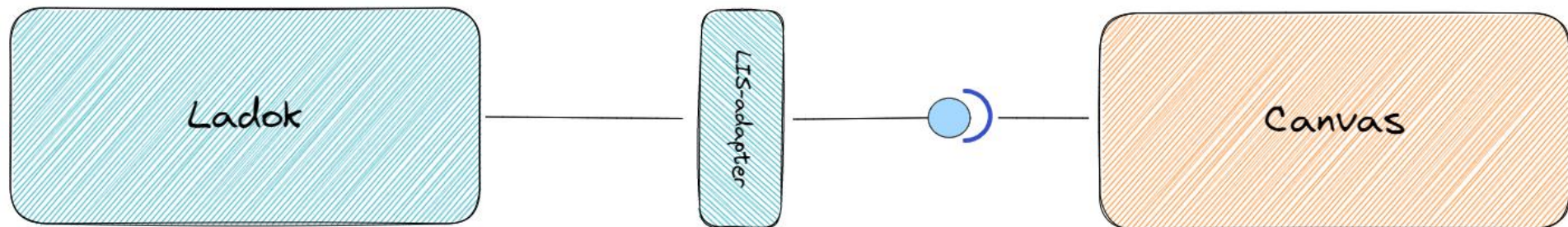
LIS – Learning Information Services

is the definition of how systems manage the exchange of information that describes people, groups, memberships, courses and outcomes within the context of learning.

- Defines response to requests
- Supports REST and .csv

LIS in Sweden

- Created an LIS-adapter between Ladok and Canvas
- Part of Ladoks integration interface
- Generalized to handle other systems than Canvas
- Provides information from Ladok in LIS format
- Asynchronous communication



Applications

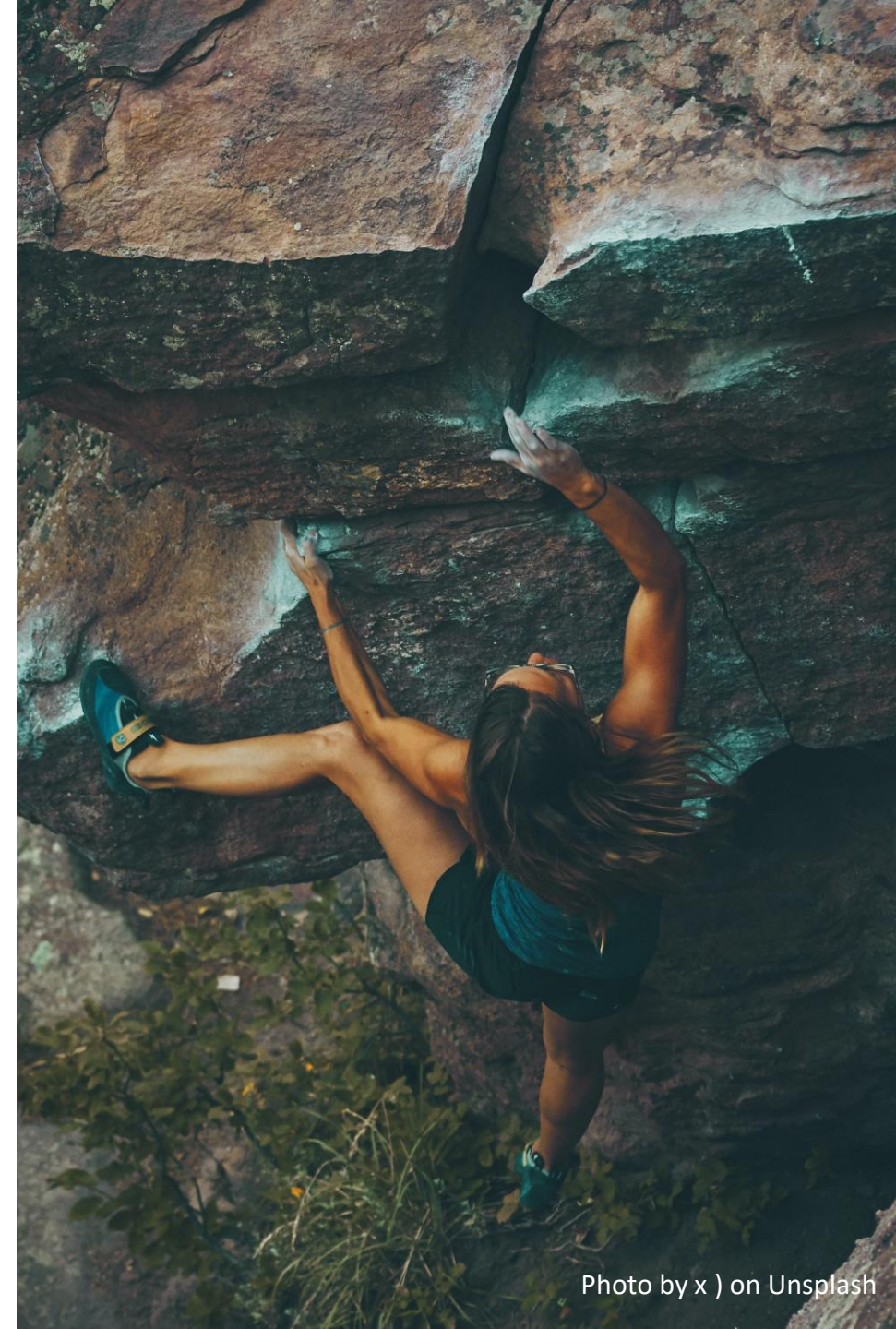
- LMS
- Business-based training
- Digital Examination
- Student mobility
- Schedule Manager
- Staffing planning
- Alumni system
- Digital archive
- ...

Ladok



LIS – challenges

- Missing some attributes for Swedish Universities
- Limited functionality for extension
- No support for asynchronous communications



Edu-API

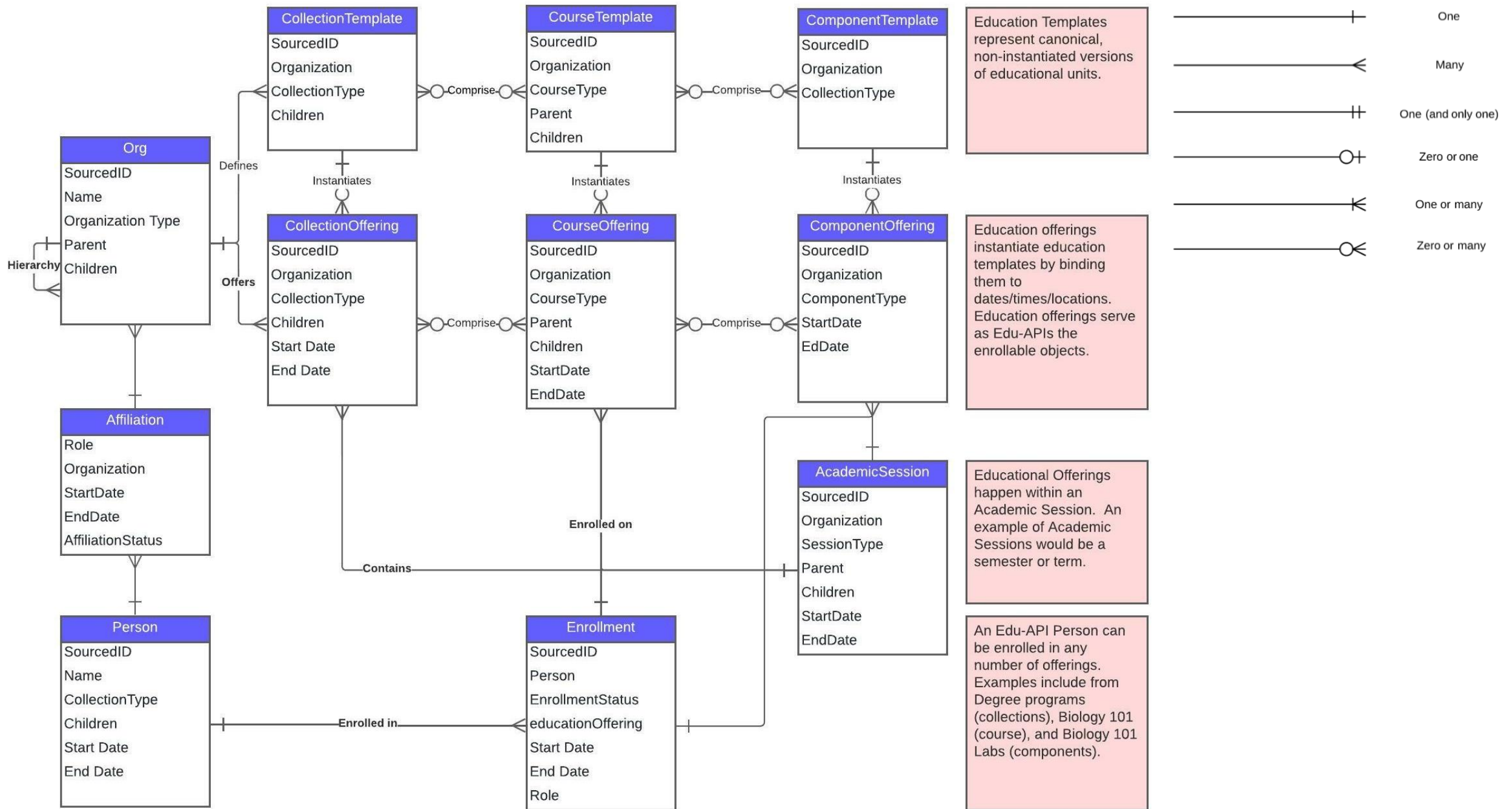
- Meeting the needs of education interoperability
- Future-proofing the solution to ensure long-term sustainability and value.
- Focuses on the payload - emission, not transmission
- Standardized exchange of data
- Not tied to a singular technology platform
- Building on LIS and experience from OneRoster and LTI

Edu-API – Sweden's contribution

- Working with the information model
- Proof of concept – mapping information from Ladok to Edu-API messages
- Identities vs. Code – Organization & Academic Session
- Localization framework
- Asynchronous communication with pub/sub

Edu-API – what's next?

- Candidate final
 - There are issues to solve or decide on
- Certification process
- Implement the specification in order to get certified
- Result and degrees in future versions



Workshop - goals

- get an understanding how Edu-API can help in your local environment
- get an understanding how Edu-API maps to your information model

Workshop - instructions

- Groups of 4-5 as you are sitting
- Take notes on a flipchart page

Workshop - questions

- Do you see any challenges with Edu-API in your local environment?
- What advantages do you see with Edu-API
- Are there use cases not covered by the model/api
- What do you see as shortcomings and areas for improvement in the model?
- Do you have a case for moving from synchronous to asynchronous communication?