

2015 UNIVERSITIC

since 2006

 **crue** Universidades
Españolas TIC
www.crue.org

Analysis of IT in Spanish Universities

Inphographic: <http://rua.ua.es/dspace/handle/10045/54169>



Antonio Fernández

CRUE TIC Executive Committee Member
and UNIVERSITIC Research Coordinator

afm@ual.es - www.gti4u.es

Vicent Andreu

CRUE TIC Working Group Member

andreuv@uji.es

Francisco Sampalo

CRUE TIC Working Group Member
and gti4u Team Member

paco.sampalo@si.upct.es - www.gti4u.es

How we are organized



What is UNIVERSITIC?

It is the name of...

- **An annual Survey**, which results are published in a report bearing also the same name.
- **A catalogue of IT indicators**, which includes 3 different kind of indicators: description, management and governance.
- **A knowledgebase**, which includes values from 9 survey editions

UNIVERSITIC is a catalogue

Divided into 3 tiers...



IT Governance

IT Management

IT Description

An integral vision of IT in a HEI !!!

- 1. Teaching and Learning**
- 2. Research**
- 3. Management Processes**
- 4. Information Management**
- 5. IT Training and Culture**



```
graph LR; A[1. Teaching and Learning] --- B[ ]; B --- C[2. Research]; C --- D[ ]; D --- E[3. Management Processes]; E --- F[ ]; F --- G[4. Information Management]; G --- H[ ]; H --- I[5. IT Training and Culture]; B --- J[IT Description Axes];
```

**IT Description
Axes**

1. IT Resources

2. IT Projects

3. IT Services

4. IT Management

**5. IT Quality, Regulations
and Standards**

6. Collaborations



**IT Management
Axes**

The diagram consists of a vertical list of six items on the left, each in bold black text. A large black right-facing curly bracket groups these items. To the right of the bracket is a large, solid blue arrow pointing to the right. Inside the arrow, the words 'IT Management' and 'Axes' are written in white, stacked vertically.

1. Responsibility

2. Strategy

3. Acquisition

4. Performance

5. Conformance

6. Human Behaviour



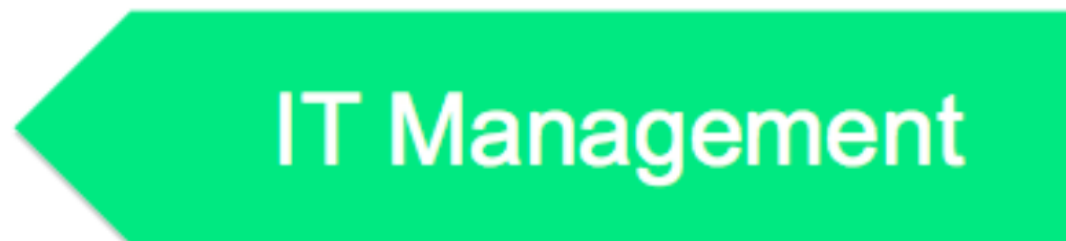
**IT Governance
Principles
(ISO 38500)**

The diagram consists of a vertical list of six principles on the left, each in bold orange text. A large orange bracket on the right side of the list groups all six items together. A large orange arrow points from the center of the bracket towards a yellow box on the right. Inside the yellow box, the text 'IT Governance Principles (ISO 38500)' is written in black, with 'IT Governance' and 'Principles' on separate lines and '(ISO 38500)' on the third line.

Principles: 6
Objectives: 30
Variables: 128
Indicators: -



Axes: 7
Objectives: 21
Variables: 142
Indicators: 26



Axes: 5
Objectives: 15
Variables: 71
Indicators: 26



UNIVERSITIC is a survey...

- **Designed by and for IT Directors**
- **Includes cost and volume indicators but most of them are best practices indicators**
- **We put our focus on Services and IT Management**



EFFICIENCY

Getting the most out of the
available resources

64
universities

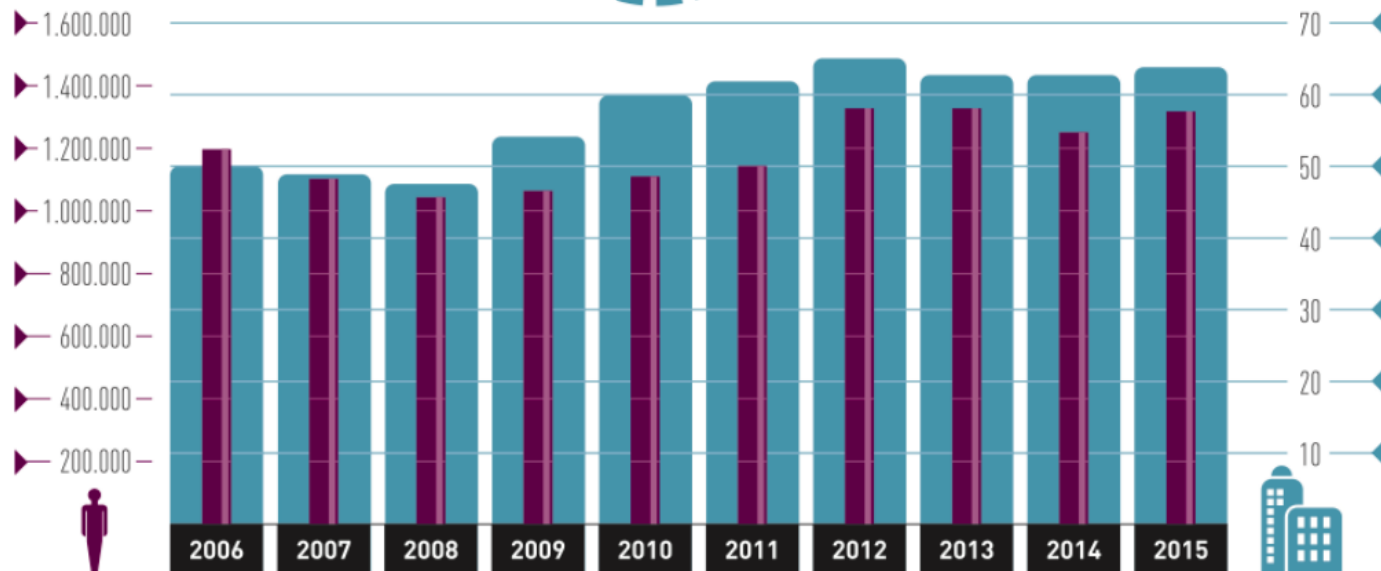
1,337,167
students

+ 90%
of university
students



102,520
faculty
(academic staff)

51,239
administration
and services staff



3.62% average budget allocated to **IT**
by universities

220,000,000
euros devoted to
centralised **IT**

4,830 specialists
in central services

50% staff costs

2,953 permanent staff (FTE)

437 temporary staff

719 IT specialists in other services

721 outsourced

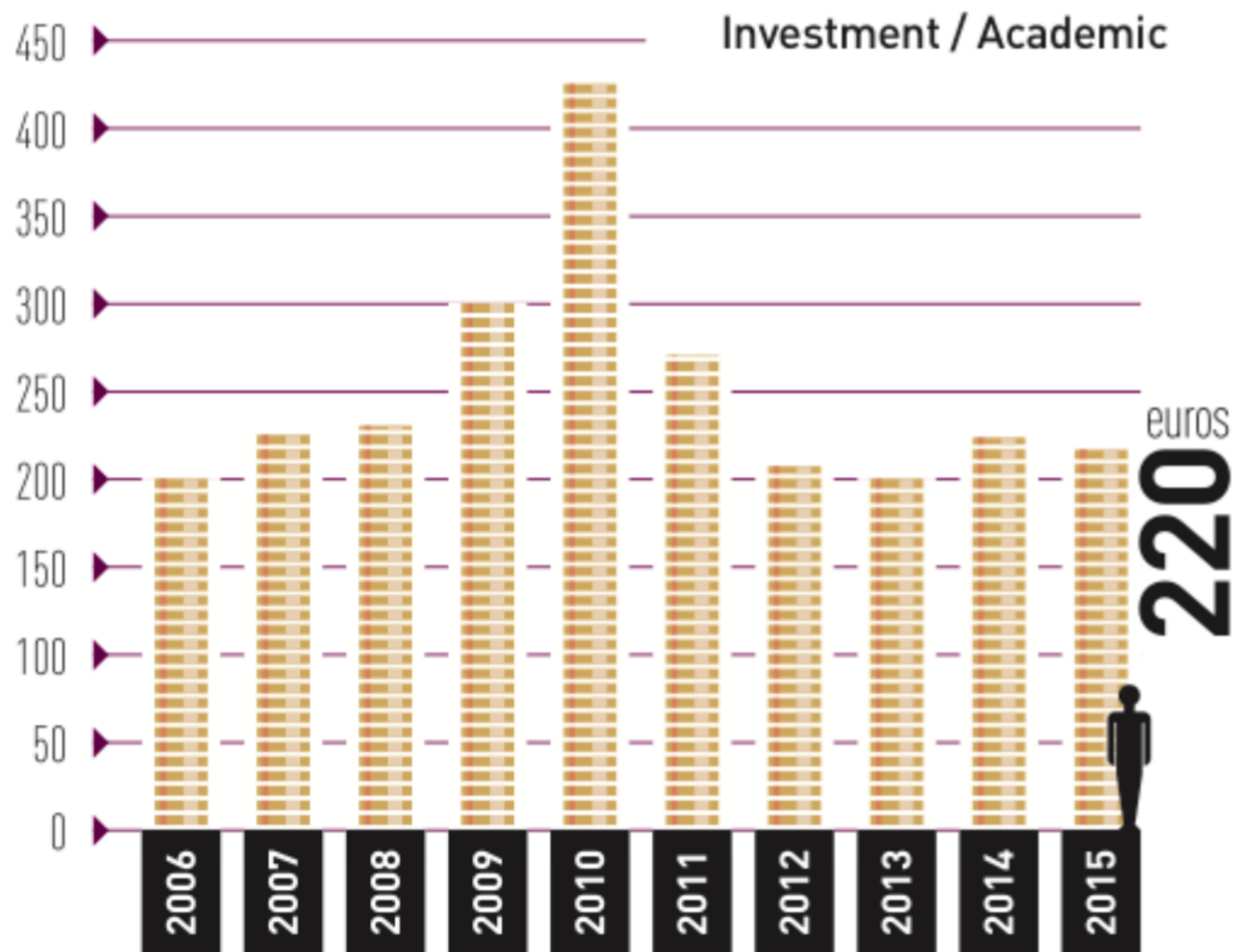
50% non-staff costs

28% new investments

15% hardware maintenance

21% software maintenance

36% outsourced services



IT manager's time distribution



26%

on designing and
planning strategies



26%

on designing projects and
supervising management



25%

on user assistance and
resolving incidents



23%

on other matters (training,
supplier assistance, etc.)

SERVICE

Providing students, teachers and managers with the equipment and services they need to work under the best conditions



183,000

computers available to students (computer rooms, open-access computer rooms and laptops)

Complemented by the students' own personal equipment (BYOD), which also require services (wi-fi network, programs, etc.)

440,000,000
wi-fi connections per year

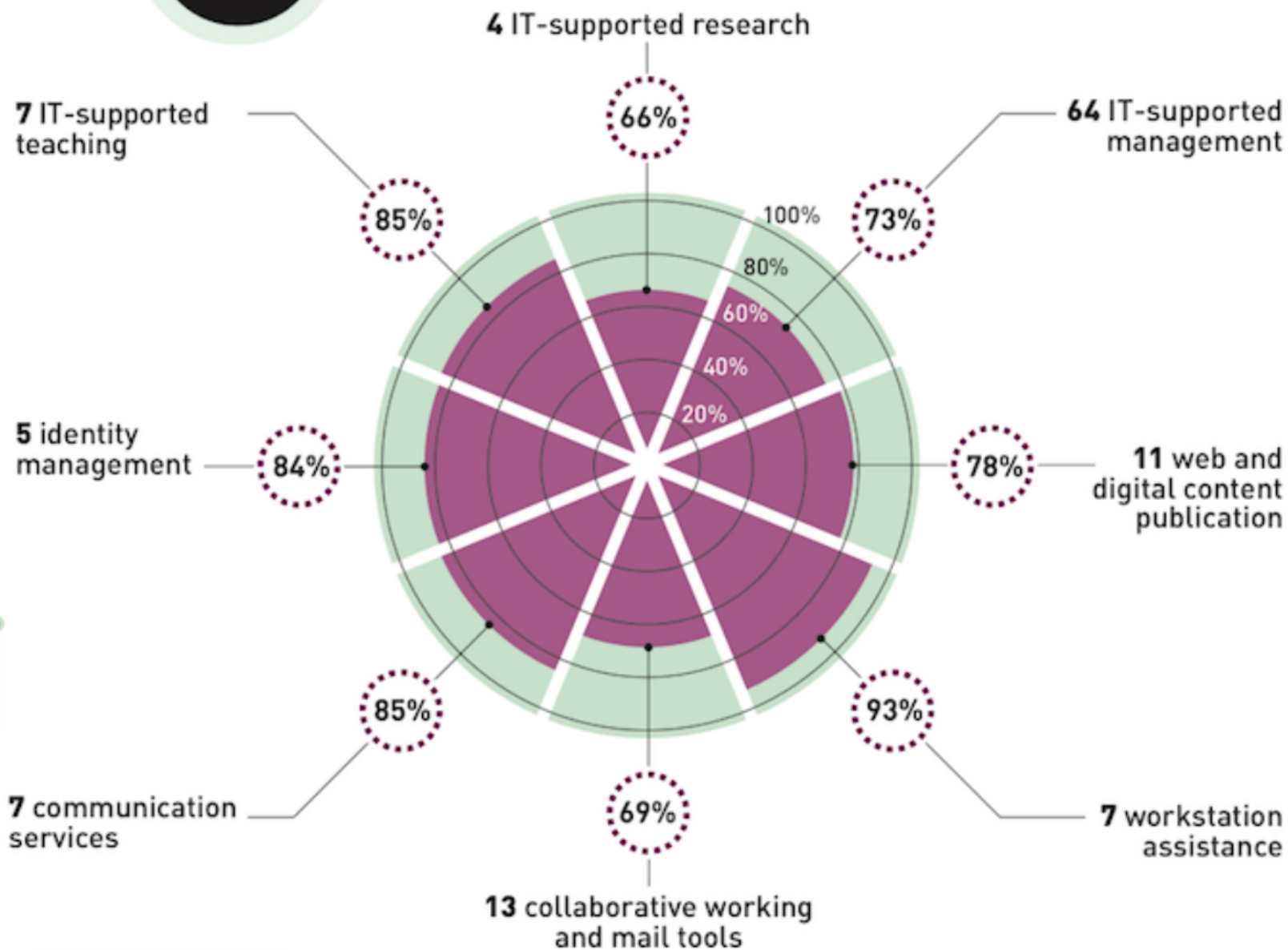


9 million x university x year

118

IT services

average % of services offered by universities



Provision of services

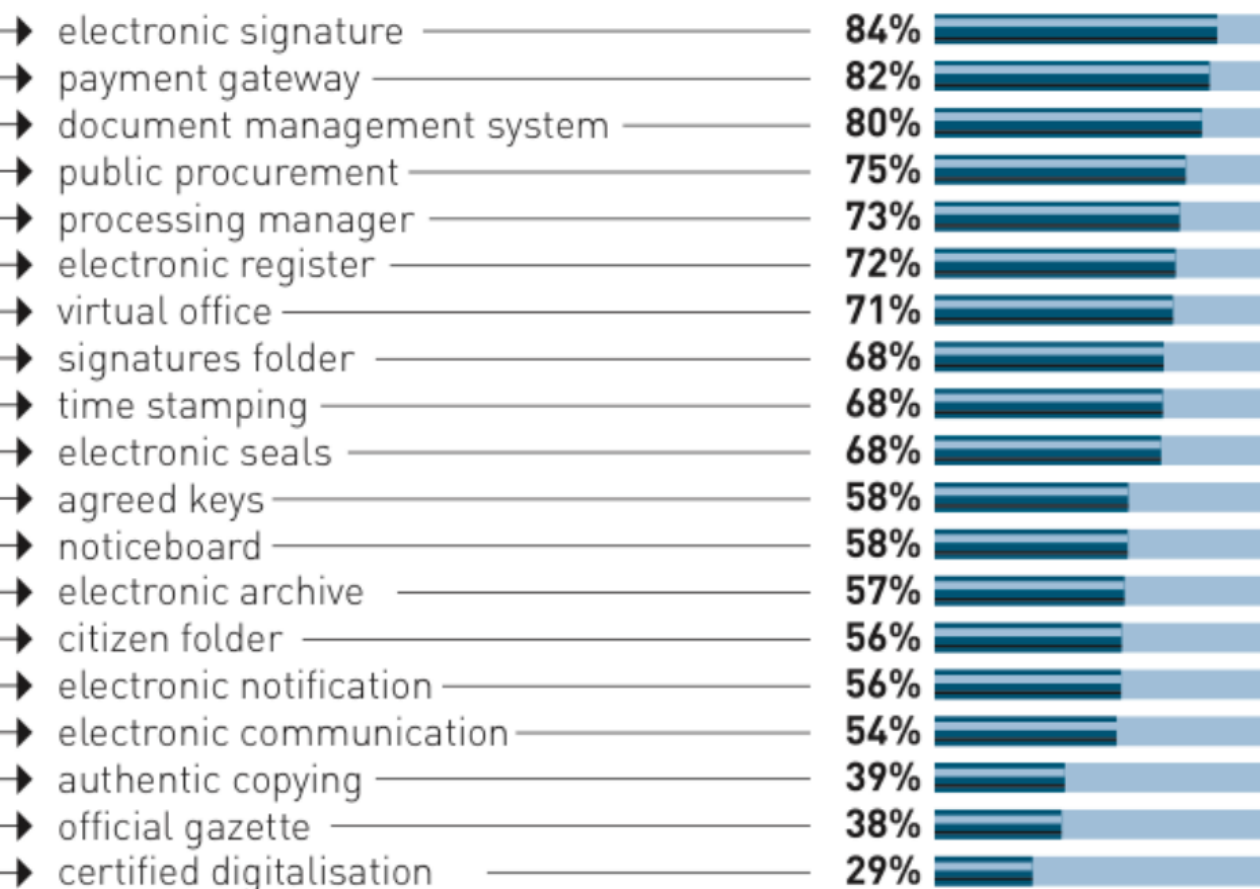
26%
SLA

12%
cloud

19%
open source

Typical elements of electronic administration

% of universities that
have implemented or
are developing them



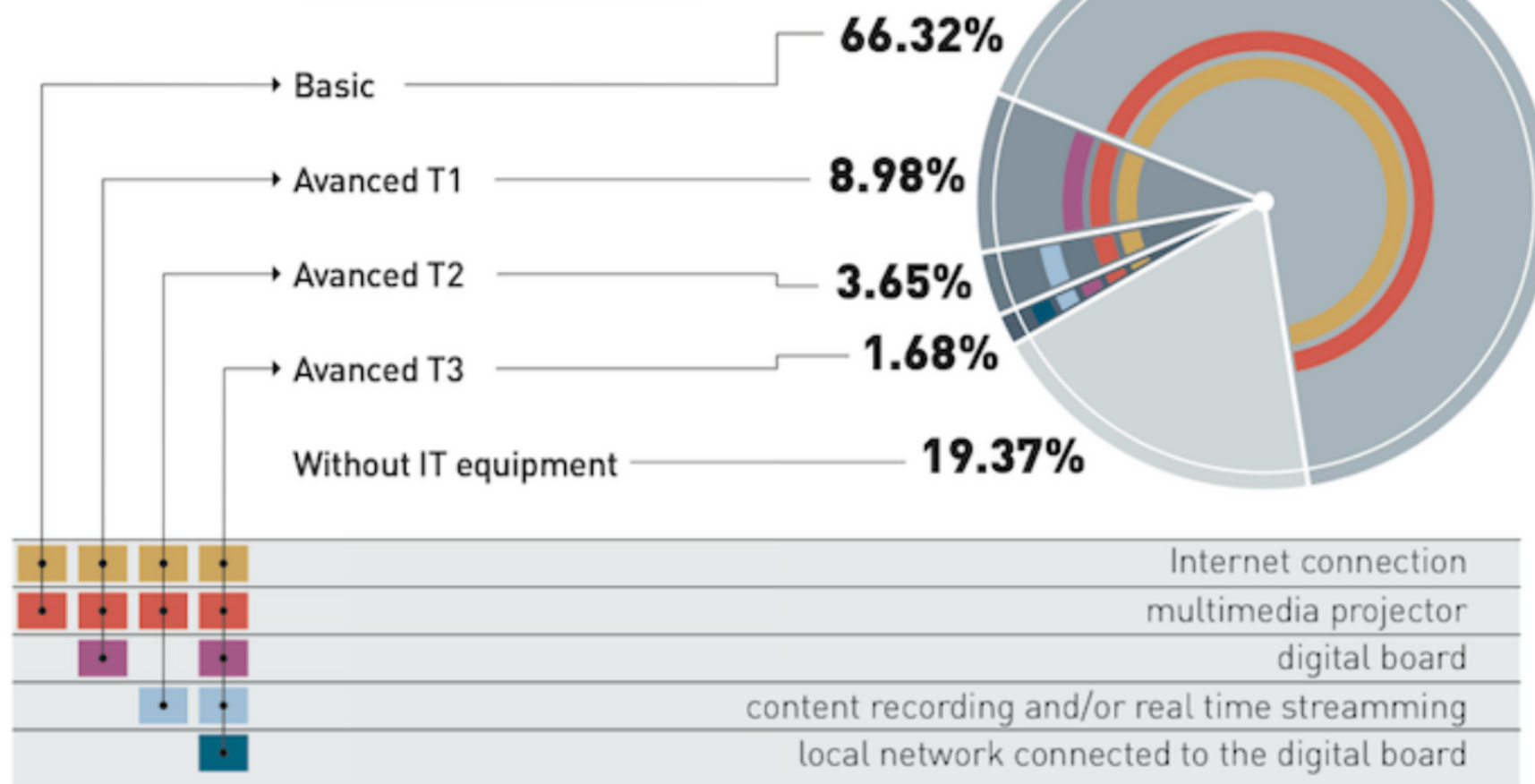


TRANSFORMATION

A new university thanks to IT

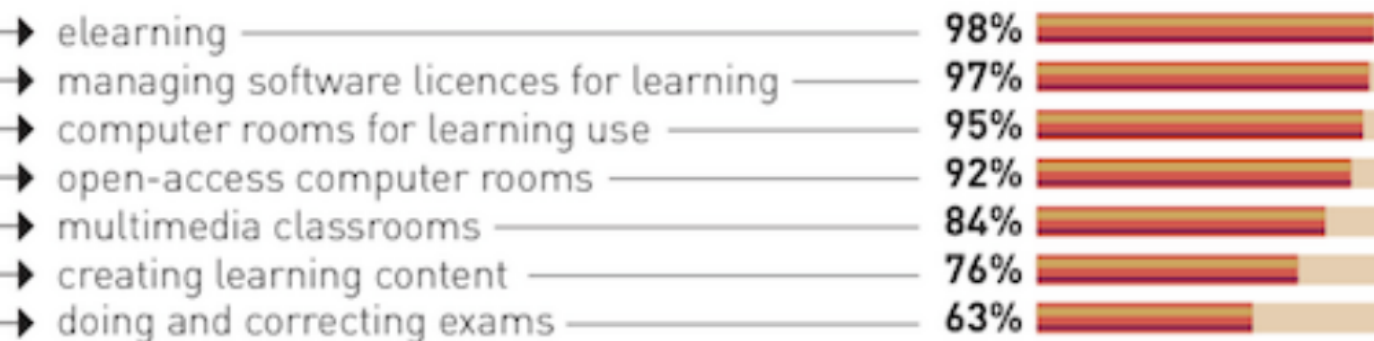
26,411

classrooms



IT teaching support services

% universities offering them



1,230

videoconference rooms

almost
50%
belong to only one
distance learning
university

532

distance learning
qualifications

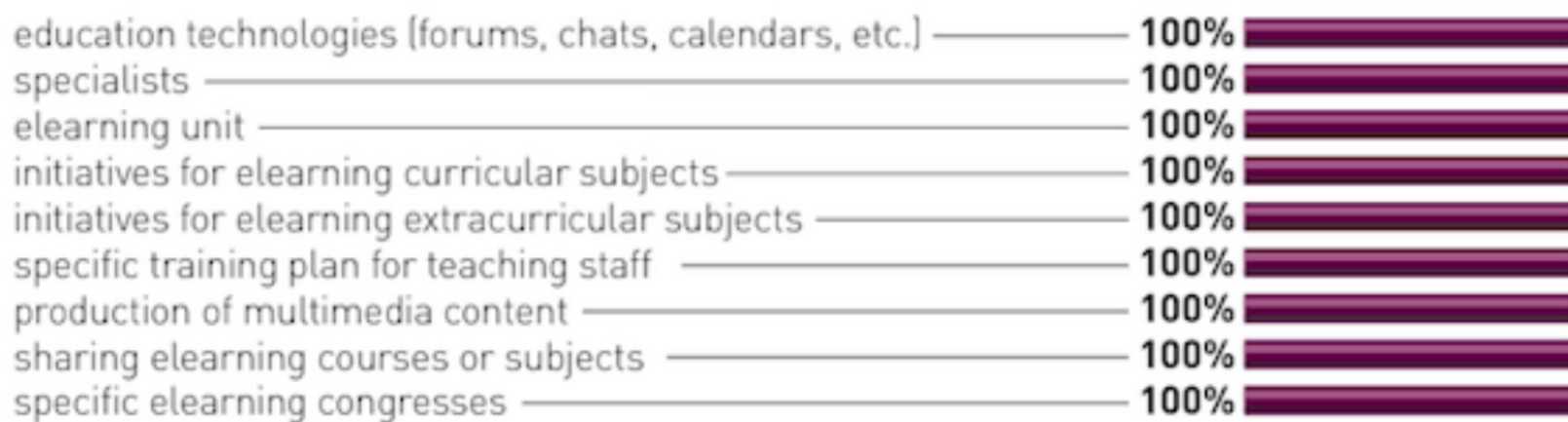
8%

of those
offered

21

good practices in elearning

9

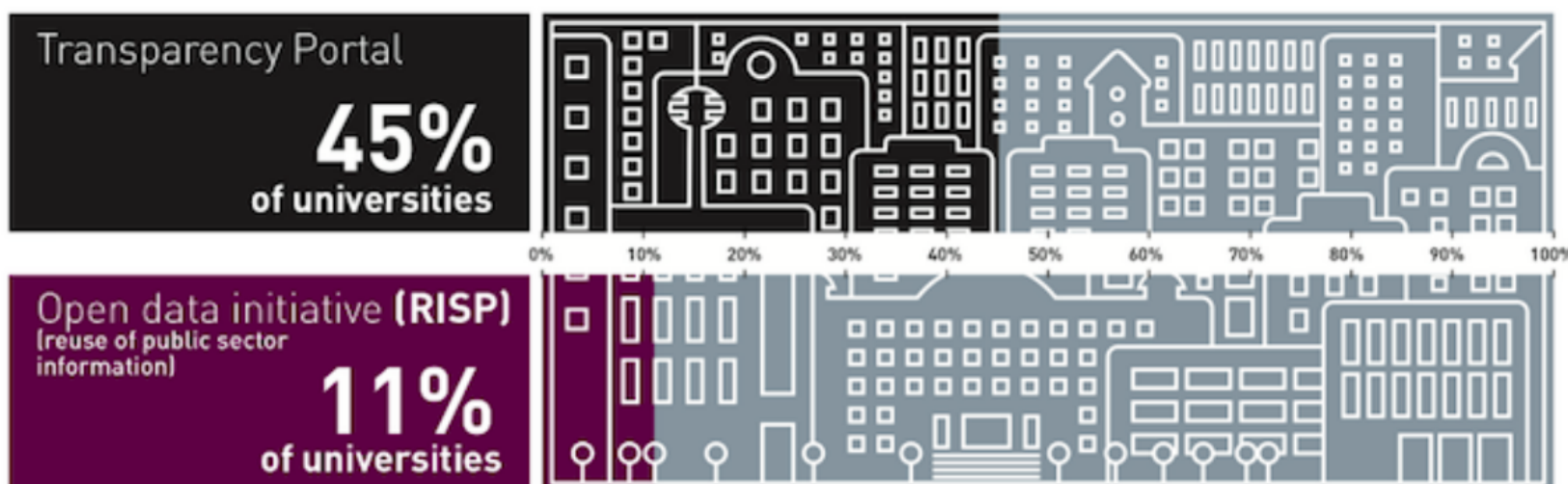
implemented in
all universities

12

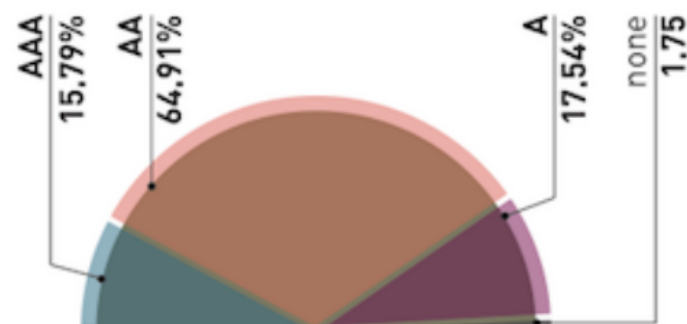
% of universities
offering or
developing them

TRANSPARENCY

Accountability to society, easy access to information and publicity for governance actions



university **websites** reach a recommended level of accessibility for public authorities (**AA or AAA**)



87%



have an **institutional content repository**

Communication with the public

8 channels
considered

5 channels used
(on average)



have published the procedure for assessing and prioritising IT projects or annually design their **IT project portfolio**



have a **decision-making** circuit for preparing IT initiatives



have **information and training processes** so users can actively participate and understand the change the new projects involve

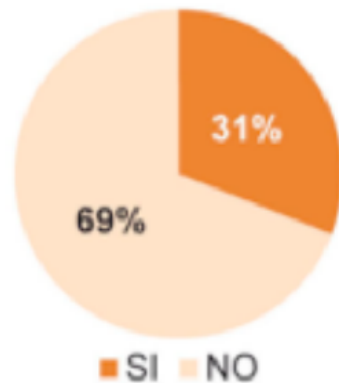


governing teams have updated information on the state of IT

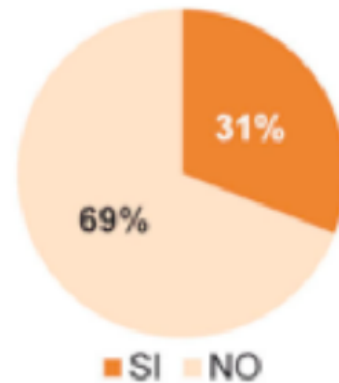


IT Governance Best Practices...

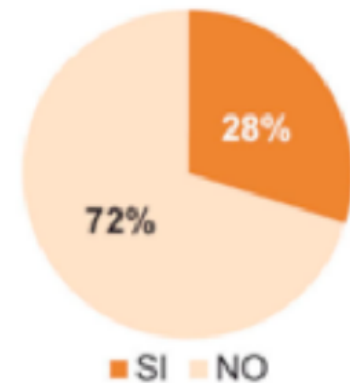
Responsibility



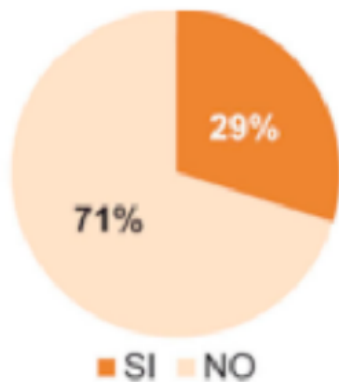
Strategy



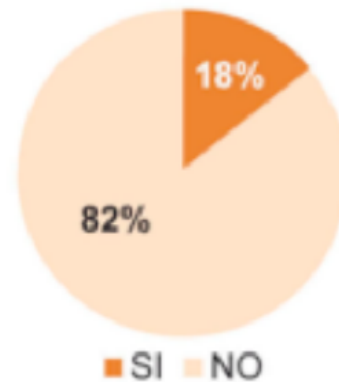
Acquisition



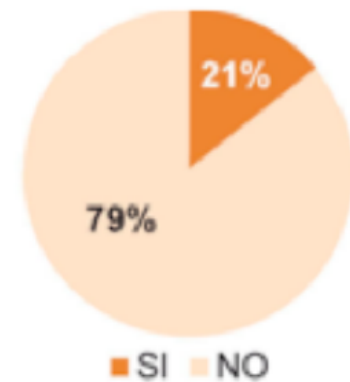
Performance



Conformance



Human Behaviour



UNIVERSITIC

since 2006

 **crue** Universidades
Españolas TIC
www.crue.org

 **gti4u** Investigamos en Gobierno de las TI
We research in IT Governance
www.gti4u.es

working with
international
surveys

Latam &

HE IT Benchmarking in Europe

Latam

- Two Editions of *UNIVERSITIC Latam*
- 15 HEIs have participated in 2013 and 42 in 2014.
- Last year, only one IT Governance project was implemented (CONFACAUCA University – Colombia).

HE IT Benchmarking in Europe

PROPOSAL: a new European IT indicators catalog...

- Which includes the main common IT indicators from our national surveys
- Each national system could keep their own surveys and feed the common system with the needed values
- Publish a final report with European results

HE IT Benchmarking in Europe

UNIVERSITIC

as a source for trans-national benchmarking

- A small subset of real UNIVERSITIC's indicators has been selected for use or adoption in trans-national benchmarking.
- As a first step, this subset of indicators has been extracted in order to show the possible results of using the model proposed.
- This is only an example, data have been anonymized and some of the indicators have been estimated as its meaning differs slightly between UNIVERSITIC and the trans-national model.

Context indicators

		Total staff	Number of students in official courses.	University's total budget.	Completed ECTS
		NPDI+NPAS	NESTUDIANTES	PRESUPUESTOTAL	NASIGNATURAS*5
	AVERAGE	2.721	24.177	169.384.164 €	19.522
	MINIMUM	218	244	9.686.564 €	1.590
	MAXIMUM	10.024	170.682	518.120.000 €	73.040
	UNIVERSITIES ANSWERING	52	52	47	51

IT resources and management indicators

		Amount of technicians working full-time in centralised Computing Services	Centralised computing services budget, excluding staff costs (in euros).	Total budget for centralised computing services (including expenses and staffing and expressed in euros)
		NTECNICOSTICC	NPRESUTI	PPRESUTOTALTI
	AVERAGE	50	2.559.950 €	5.058.680 €
	MINIMUM	4	118.193 €	317.292 €
	MAXIMUM	163	12.029.210 €	19.400.000 €
UNIVERSITIES ANSWERING		61	46	42

CIO on the Board

CIO on the governing board

		BEGRESTI	
UNIVERSITIES ANSWERING	YES	40	71%
	NO	16	29%
		56	

Examples of data analysis I

	IT staff vs Total staff	IT budget vs Total budget	IT staff vs IT budget (€ per IT person)	IT staff vs Number of students (students per IT person)
AVERAGE	2,07%	3,44%	98.900 €	456
MINIMUM	0,48%	0,88%	22.932 €	61
MAXIMUM	5,30%	10,19%	230.952 €	1575
VALID DATA	61	42	42 €	61

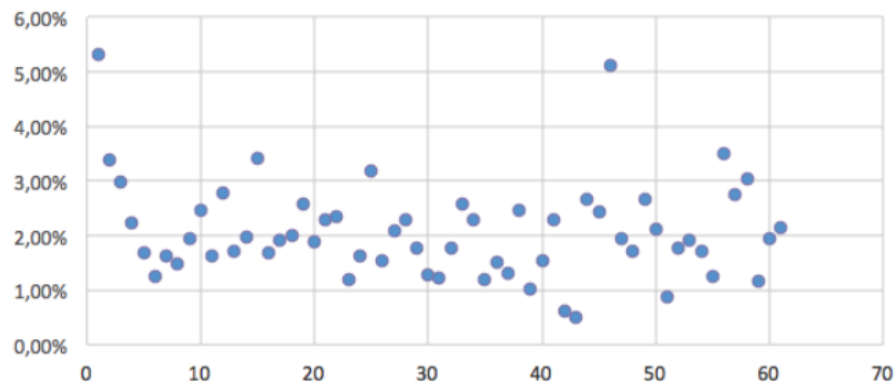
Examples of data analysis II

IT staff vs Total staff

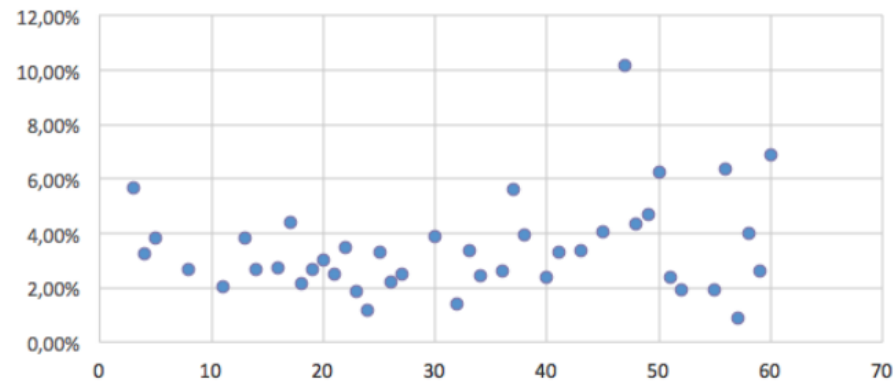
IT budget vs Total budget

CIO in the governing board		YES	NO	YES	NO
	AVERAGE	1,9%	2,5%	3,1%	4,3%
	MINIMUM	0,5%		0,9%	
	MAXIMUM	5,3%		10,2%	
	VALID DATA	40	16	40	16

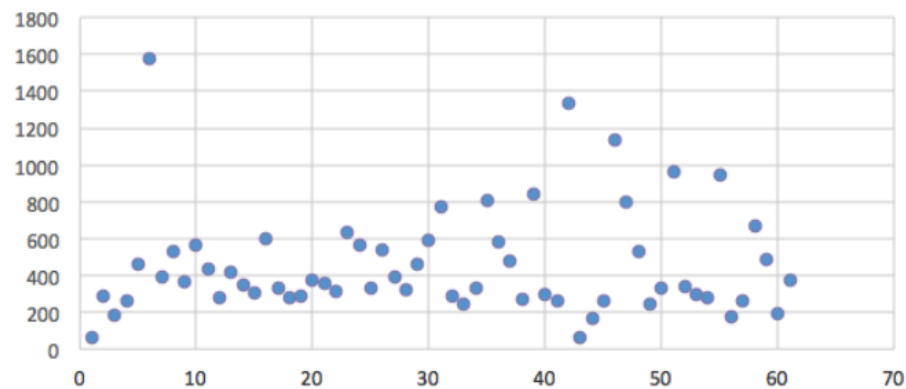
IT staff vs Total staff



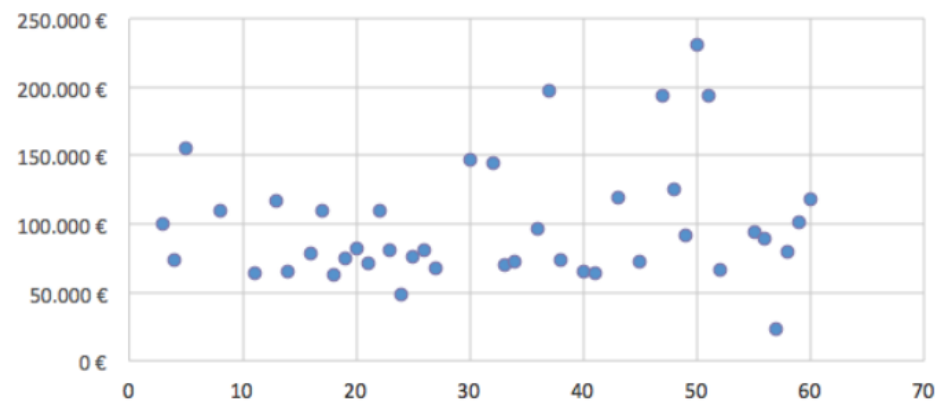
IT budget vs Total budget



IT staff vs Number of students



IT staff vs IT budget





Analysis of IT in Spanish Universities

Thanks

